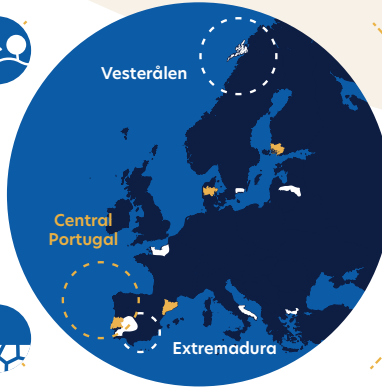
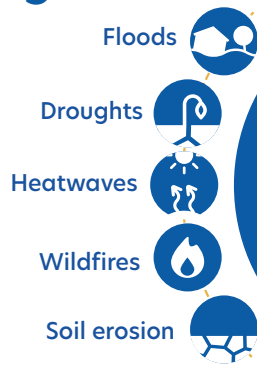


Central Portugal

Main challenges



Demo sites

Main focus in RESIST

RESIST Project activities in Central Portugal will focus on **promoting better land use, forest management and the bio-circularity of green bio-waste.**

The demo site in the **Coimbra Region** will test innovative solutions focused on **improving the participatory and governance model** of the Integrated Areas of Landscape Management (AIGP) and "village condominiums." In **Coimbra**, activities will explore **innovative economic models for forest management** to demonstrate

the impacts and increase the resilience of territories to rural and forest fires. The aim is to develop a new business model for the **use of biomass** in rural activities.

Médio Tejo is going to test new **local policies focused on agroforestry and socioeconomic metabolism.** The aim is to transform the area into a multifunctional bio-economy pilot region. The activities will **optimise forest management, prevent wildfires, and boost new business models based on a circular economy.**

Goals

- Multi Development of communication and citizen involvement strategies.
- Integration of vulnerable population groups' perspectives.
- Development of strategies and tools for the involvement of landowners.
- Development of screening measures for maladaptation.

Main achievements so far

- | | |
|---|---|
| <h3>Coimbra Region</h3> <ul style="list-style-type: none"> • Identification of suitable areas for activities before summer. • Stakeholder management. • Site visits with stakeholder mapping activity and selection of case studies. • Capacity building for technicians. | <h3>Médio Tejo</h3> <ul style="list-style-type: none"> • Procedures to buy equipment to support the work in the forest (e.g. bio shredder). • Definition of areas and tasks in collaboration with the municipalities. |
|---|---|

Innovations

<h3>Graphic Digital Twin training</h3> <p>Developing training modules on visualisations and the use of Graphical Digital Twin technologies.</p>	<h3>Integrated landscape planning, management</h3> <p>Fostering better land use through an integrated territorial approach for landscape planning and management</p>	<h3>Policy innovation</h3> <p>In Médio Tejo, focusing policy-making towards agroforestry and socio-economic metabolism with the aim of creating a bio-economy pilot region.</p>	<h3>Business innovation</h3> <p>In Coimbra, developing new economic business models for the use of biomass in micro-owned rural activities and as a multifunctional bioeconomy tool.</p>	<h3>Green bio-waste</h3> <p>Droughts, Heatwaves, Soil Erosion, Wildfires. Developing bio-circularity through the collection and transportation of local biomass for conversion to renewables gases via a pilot biorefinery using thermal gasification technology.</p>

Consortium

