

Pathways2Resilience

Guiding Regions through the Regional Resilience Journey and
Adaptation Investment Cycle

Thomas KOETZ, Climate-KIC, Co-Coordinator of P2R

RESIST, 02 December 2025



Funded by the European Union under grant agreement No 101093942. Views and opinions expressed are however those of the author(s) only and do not necessarily reflect those of the European Union or of CINEA. Neither the European Union nor the granting authority can be held responsible for them.

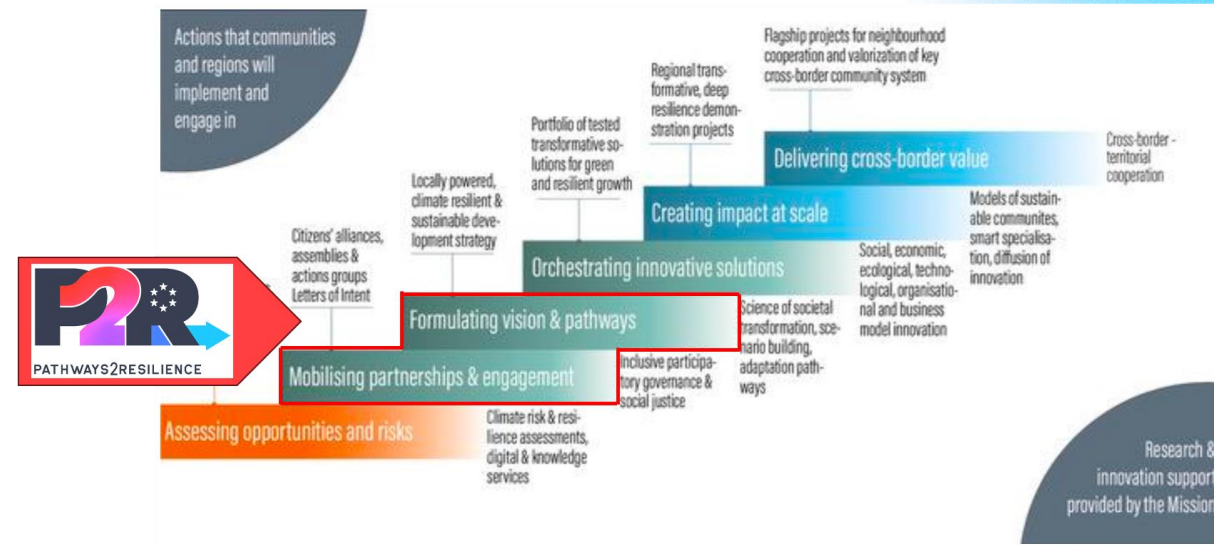
Pathways2Resilience contributes to implementing the Mission Adaptation's objectives

- Its objective is to empower at least 100 European regions and communities to design climate resilience pathways by 2030.
- Total budget: 29,609,362 EUR from which 21M EUR is reserved for funding regional projects through public calls
- Duration: 5 years

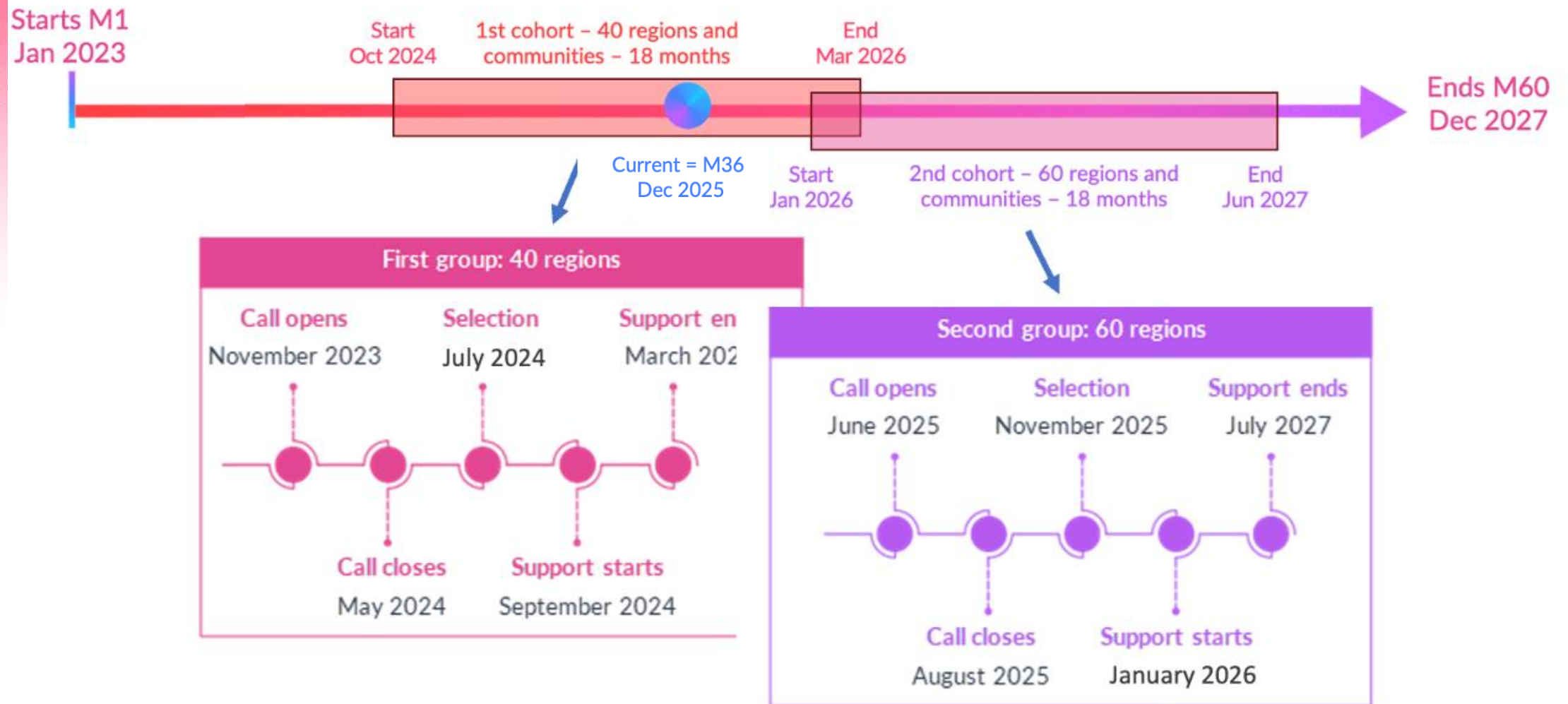
Starts M1
Jan 2023

Current = M36
Dec 2025

Ends M60
Dec 2027

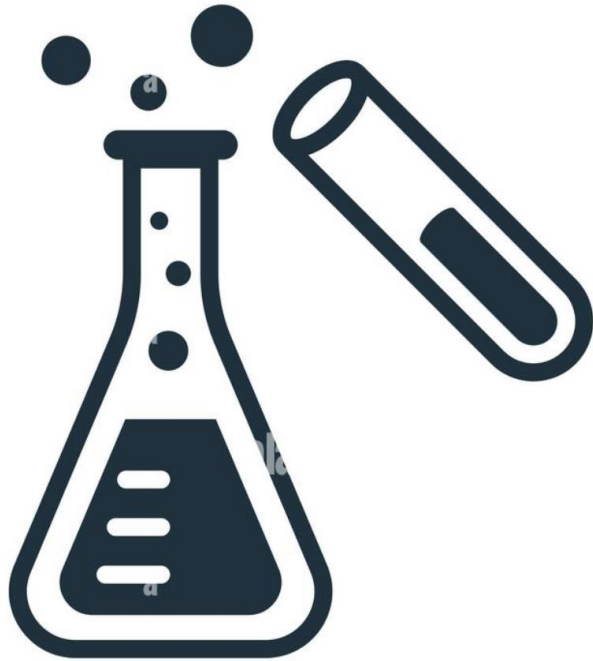


Timelines of P2R

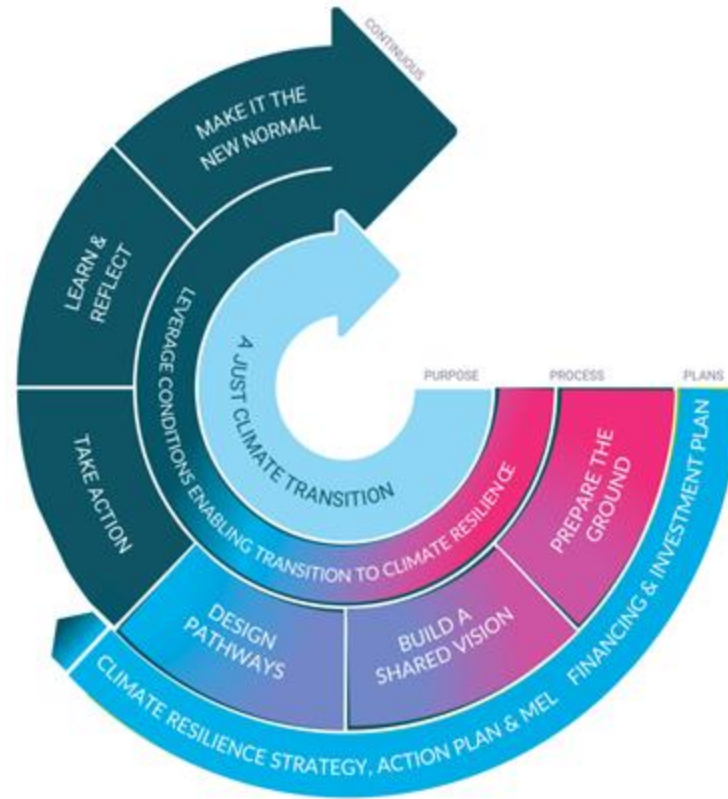




So what is P2R ?



Experiment

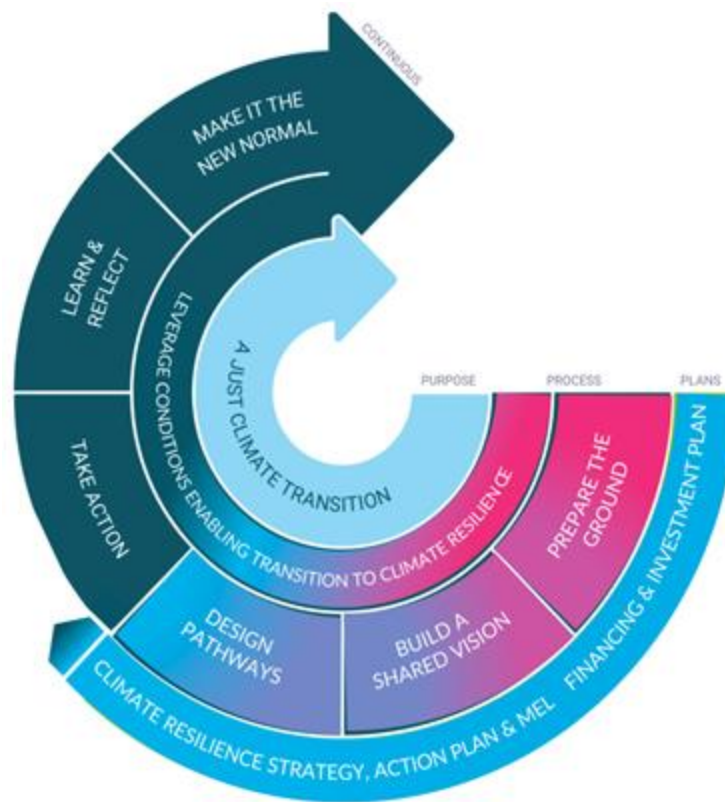
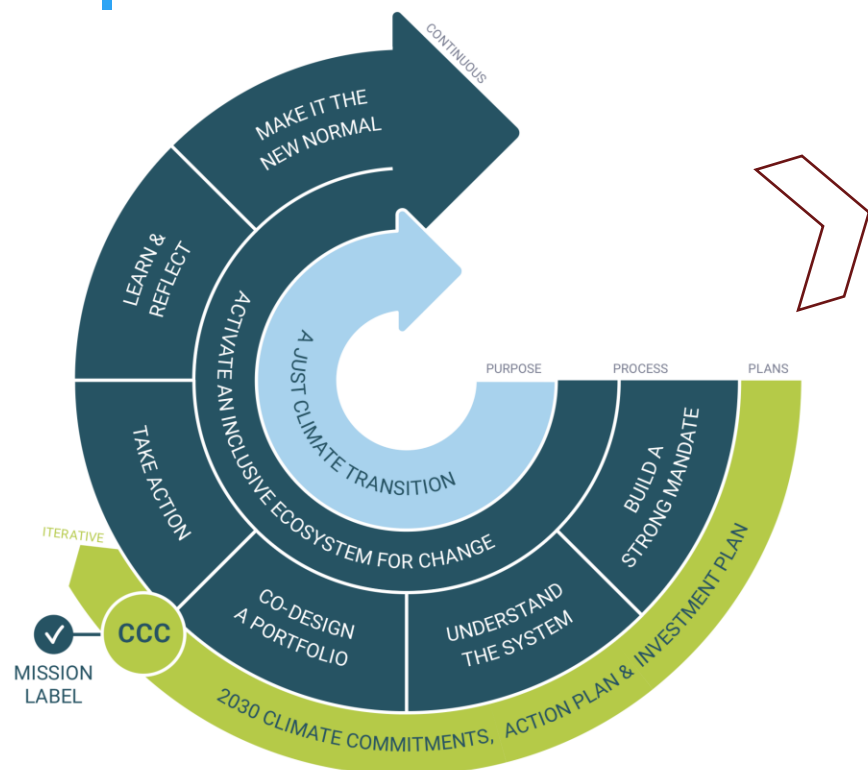


Framework

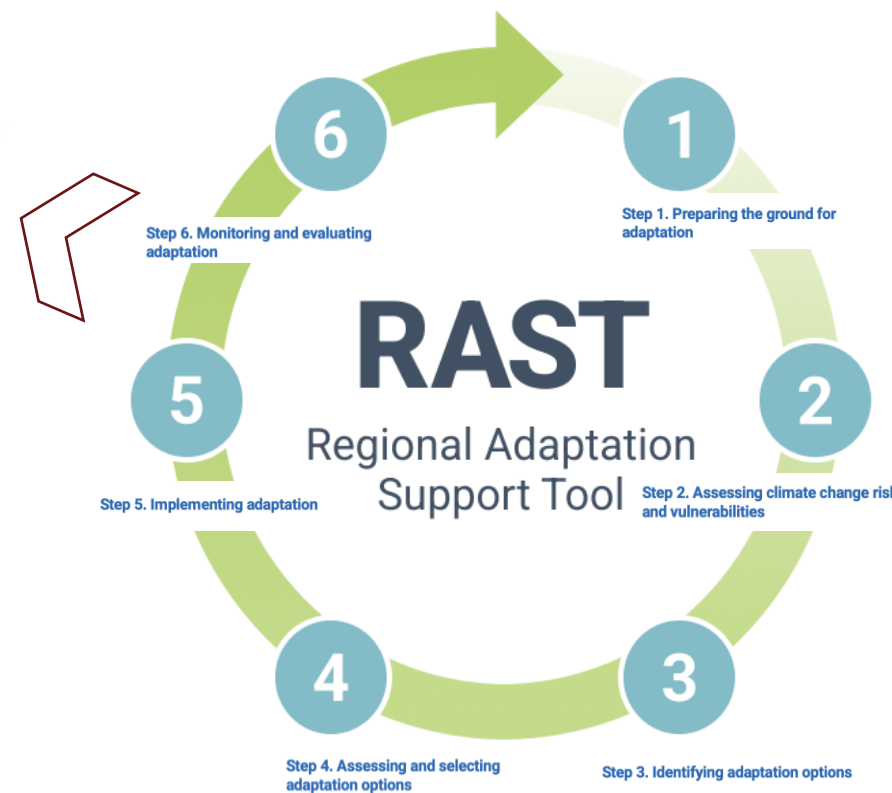


Support Programme

P2R's Regional Resilience Journey

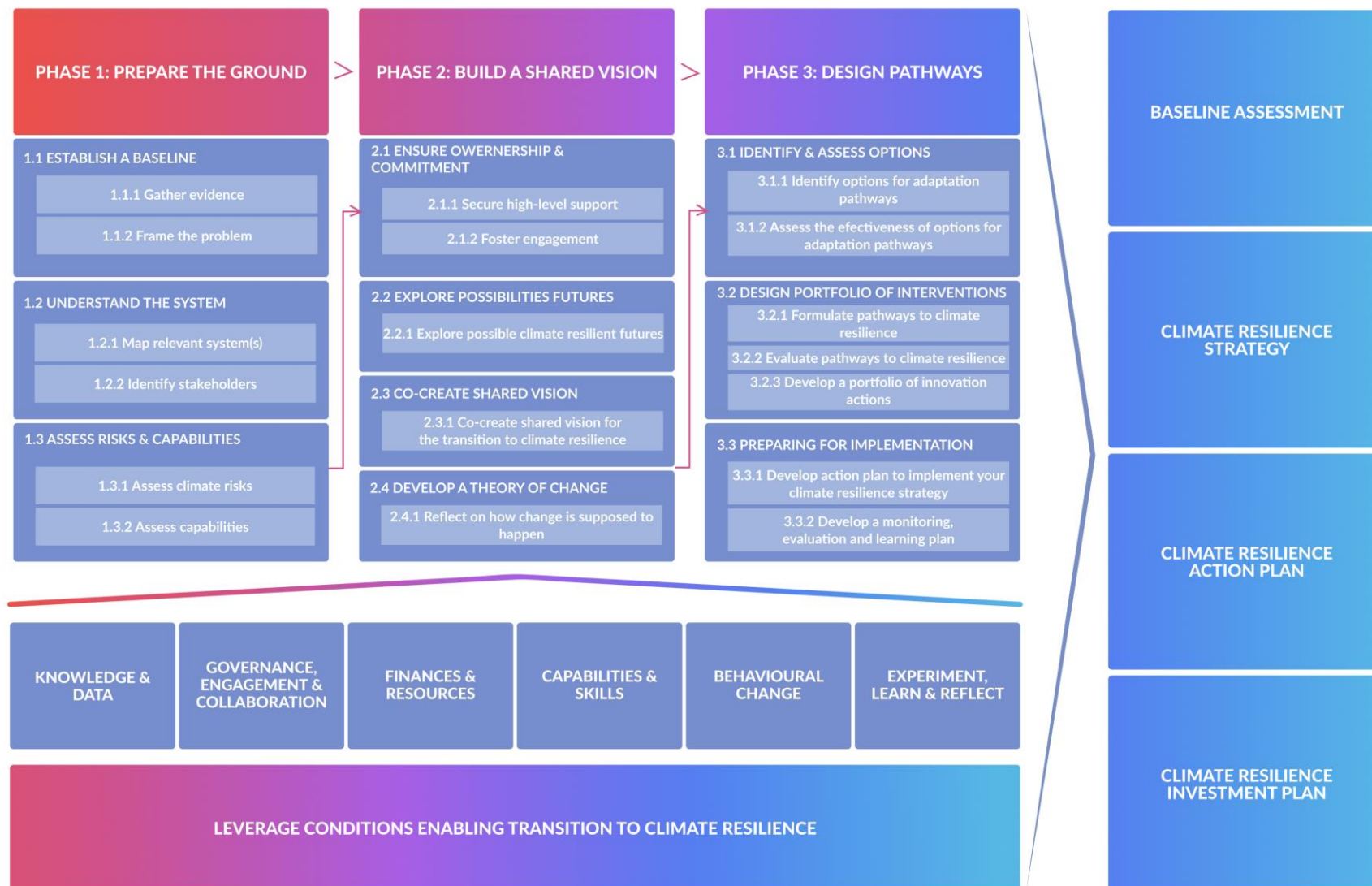
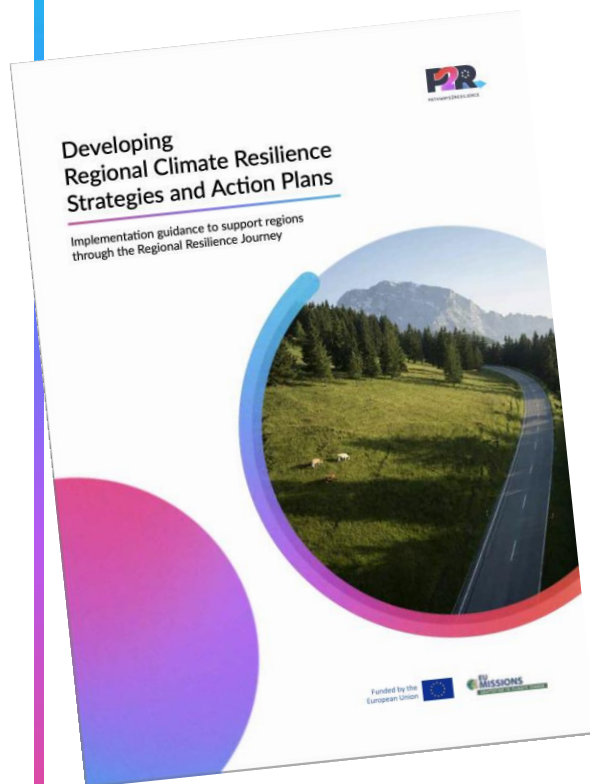


Framework





P2R's Regional Resilience Journey

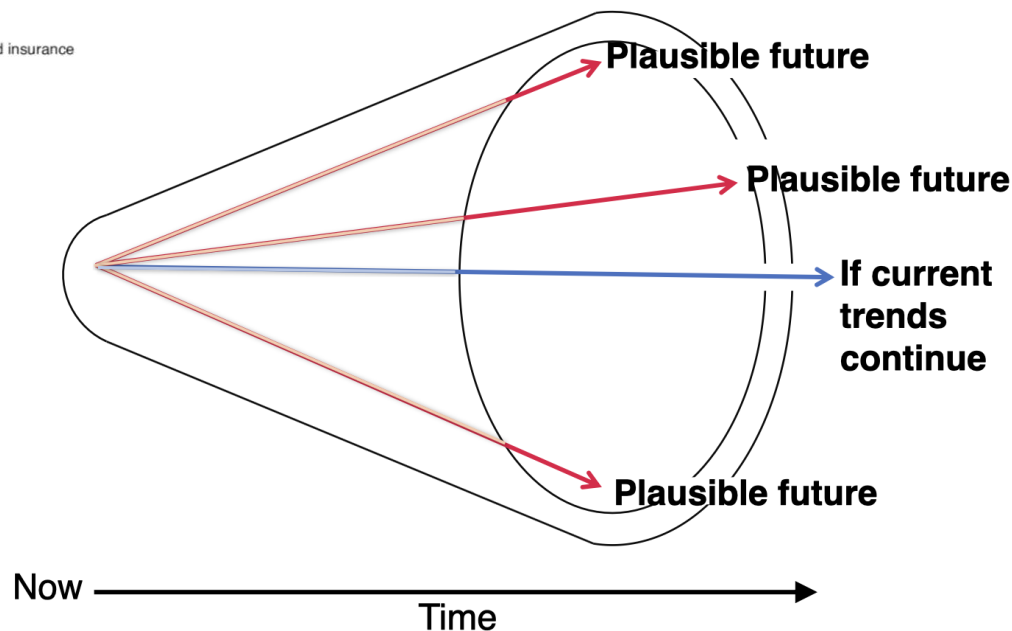
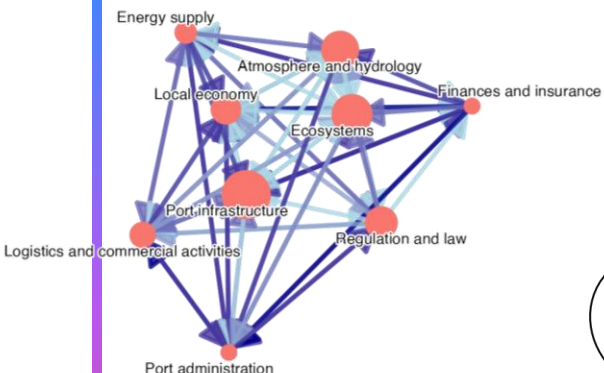


P2R's Regional Resilience Journey

Exposure (based on LST)

Vulnerability (pop data)

Risk



Pathways map

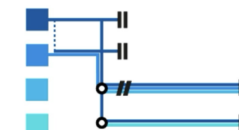
Mitigation

Climate action plan 2024 - 2029¹

Renewables on roof
EV & CNG vehicles

Site-specific CCS

Multipl. decarbonization zones



| Performance threshold
// Opportunity point
|| Target point

¹Decarbonization zone (pilot); Retrofit housing; Nearly Zero-Energy Buildings; Sustainable transport; Circular economy

²Washlands; Dam operations; Medium quayside defences; Riverflow reduction; Floodforecasting system

Adaptation | Flood (fluvial & tidal)

Lower Lee flood relief scheme²

Huge washlands

High quayside defences

Tidal barrier + huge pumps

Partial retreat

Adaptation | Heat

Urban greening + green roofs

Cool pavements + blue spaces

Airconditioning in buildings

Cooling centers + water taps

Sustainable development

Dock areas regeneration (100%)

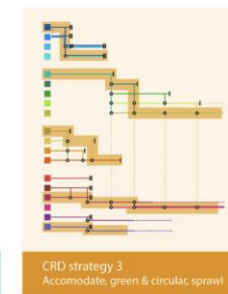
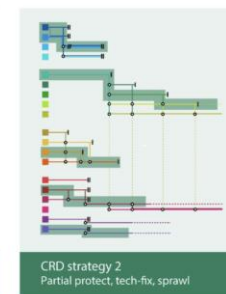
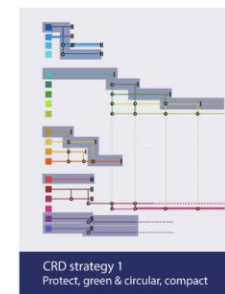
Dock areas regeneration (adapted: elevated, 50%)

Urban development on higher grounds (50 or 100%)

Managed partial retreat

15-minute city

Walkable neighborhoods





Adaptation Investment Cycle (AIC)

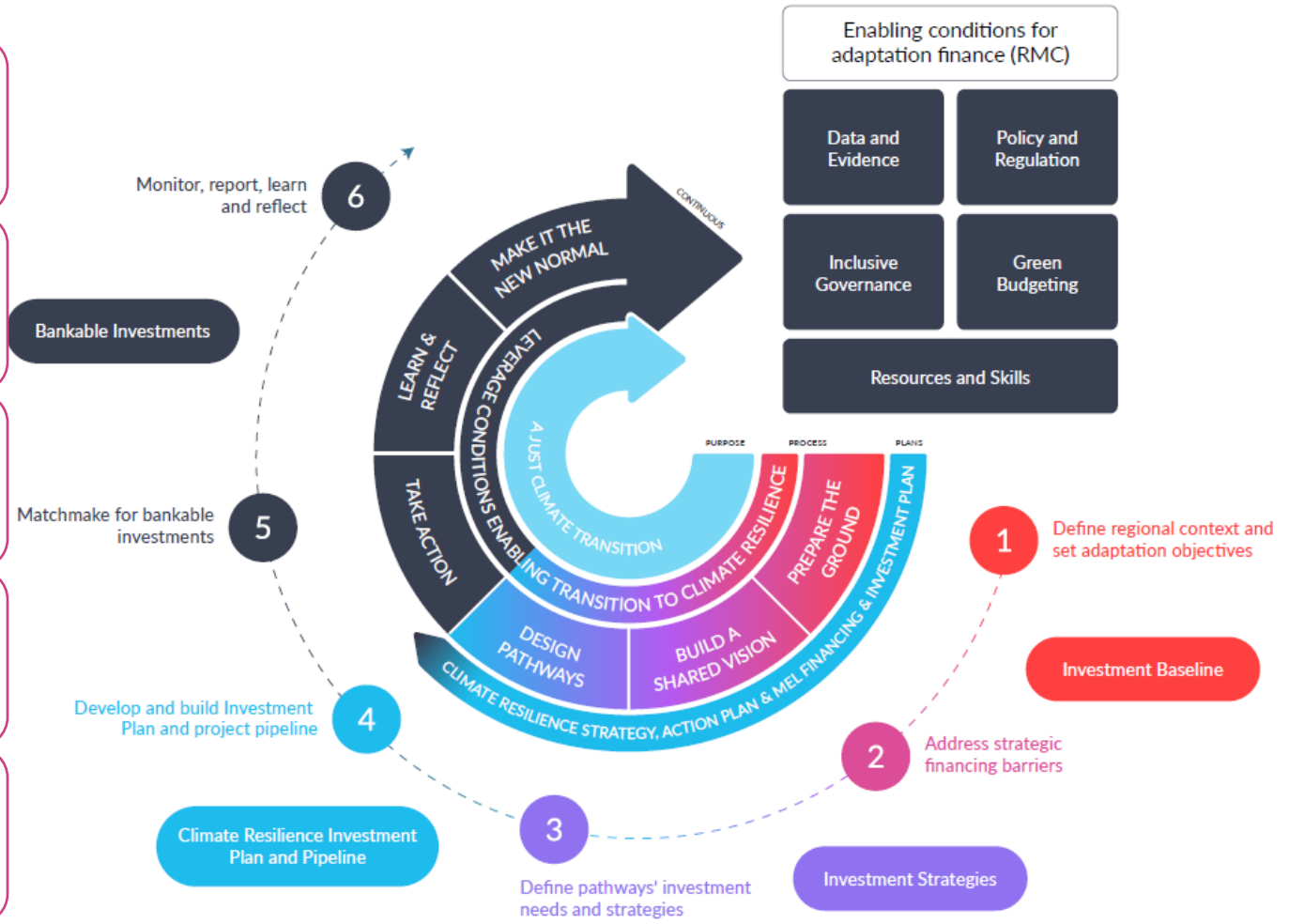
Comprehensive & *flexible* 6-step Process to support the RRJ

Translates high level visions into pipelines of bankable projects

Focus on **addressing barriers** to adaptation finance

Emphasis on financial and economic Rationale from **Step 1**

Traditional adaptation cycle very science based - Economics and finance left until step 4 (assess options).



AIC Specifics

- Output is **Climate Resilience Investment Plan** aligned with Climate Resilience Strategy and Action Plan.
- Developed in 4 phases, supported by enabling conditions for adaptation finance.
- All tasks recommended, but some more important / difficult than others.





AIC - Addressing common barriers

Economic & Market	Identifies economic and social benefits of adaptation and encourages the development of an economic rationale
Financial	Encourages the diversification of funding sources and prioritizes <i>bankability</i> considerations from <u>early on</u>
Political	Streamlined process acknowledging regional priorities and processes
Behavioral	Co-creates value propositions with all relevant stakeholders
Technological	Embedded in Innovation Agendas + introducing financial innovations
Knowledge & Awareness	Steers regional planners to directly address the systemic financial barriers



P2R's Support Programme

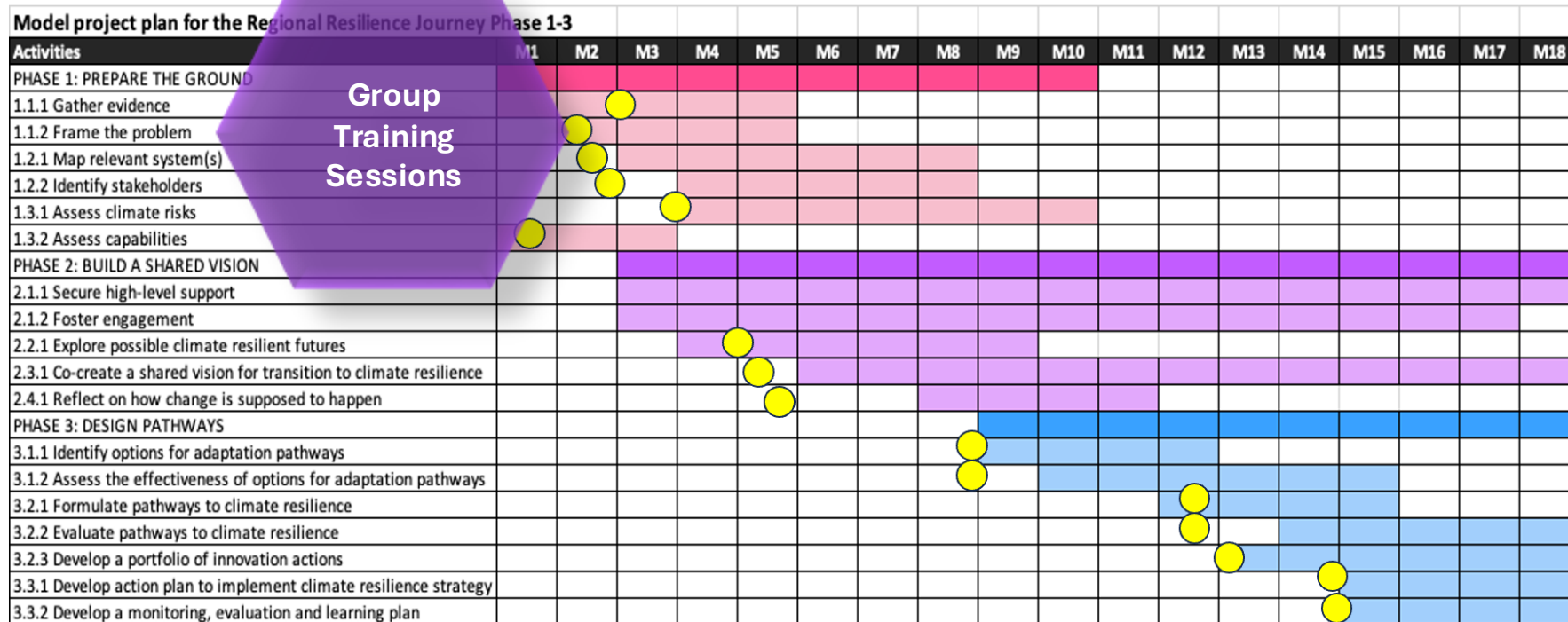


Support Programme



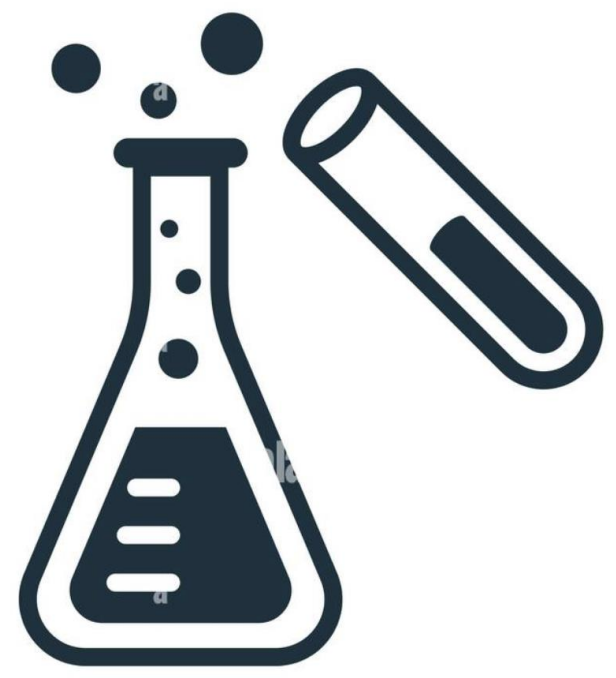
P2R's Support Programme

Practical sessions designed to build technical capabilities that regions will need to complete their climate resilience strategy, climate resilience action plan and climate resilience investment plan, through novel learning experiences focusing on climate adaptation, covering all elements of the Regional Resilience Journey and the associated Adaptation Investment Cycle.

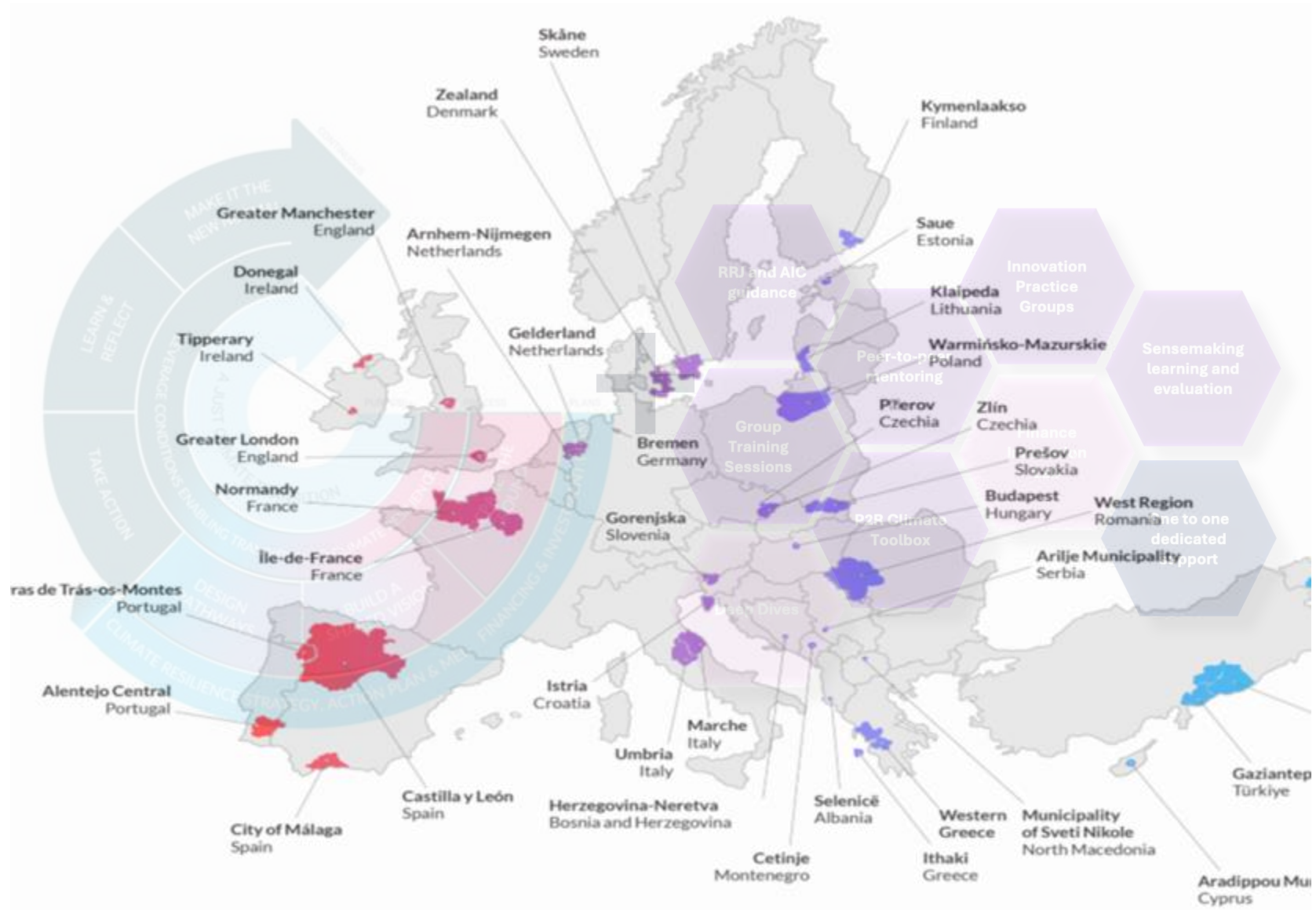




P2R – The Experiment



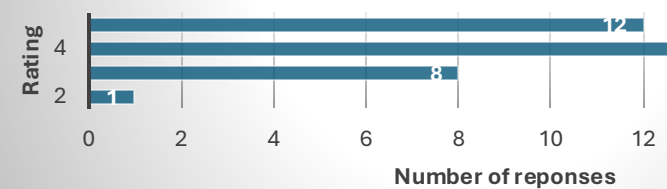
Experiment



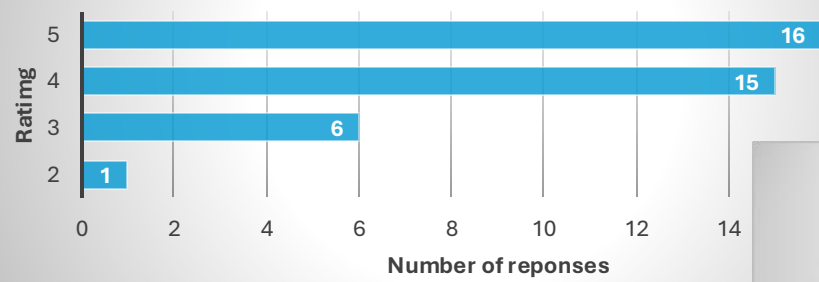


Feedback of 1st cohort (July 2025 - at mid-point)

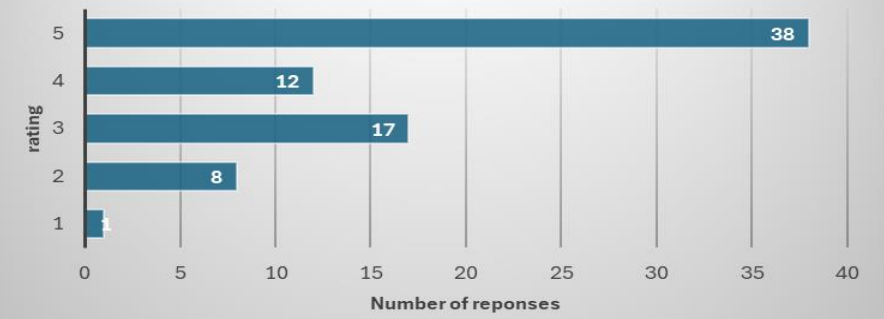
To what extent are you satisfied with the overall support you've received from the P2R project?



To what extent did you find the guidance documents useful?



To what extent did you find the Capacity Building sessions useful?



Thank you!



Co-funded by the
European Union



European Regions
Research and
Innovation Network



Local Governments
for Sustainability
EUROPE



sustainable innovation



Sustainable Development



Climate
Centre



ATHENS UNIVERSITY
OF ECONOMICS
AND BUSINESS



MEMBER OF BASQUE RESEARCH
& TECHNOLOGY ALLIANCE



Deltares

Paul Watkiss Associates

Pathways2Resilience consortium

Coordinated by EIT Climate-KIC, the initiative builds upon the expertise of 14 partners from 10 countries, leveraging a vast array of knowledge and expertise, as well as access to an extensive network of regions throughout Europe. It brings the combined strength of:

- **Regional network organisations** - to engage and build a movement of Mission Adaptation regions and communities.
- **Technical expert organisations and designers of a transformative adaptation approach** - providing the services to design pathways and innovation agendas.
- **Adaptation finance experts** - providing the services and latest state-of-the-art thinking on how regions can finance the adaptation ambitions for long-lasting impact.
- **Learning and capability building specialists** - to support regional cohorts in building resilience capabilities along their journeys towards a climate resilient future.
- **Monitoring and innovation impact partners** - to design an impact framework for benchmarking and assessing regional resilience maturity.